

IRELL & MANELLA GRADUATE SCHOOL OF BIOLOGICAL SCIENCES

IRELL & MANELLA
LLP



IRELL & MANELLA GRADUATE SCHOOL OF BIOLOGICAL SCIENCES

On May 15, 2009, City of Hope, one of America's preeminent research and treatment centers, named its graduate school The Irell & Manella Graduate School of Biological Sciences after one of America's preeminent law firms.

So, what's a nice law firm like Irell & Manella LLP doing in a place like this?

It is unusual, indeed unprecedented, for a law firm to endow a graduate school. But Irell & Manella is not your usual law firm. Nowhere has this been more dramatically demonstrated than in its relationship with City of Hope.

The relationship began in 1998, when Irell & Manella began representing City of Hope in a landmark intellectual property lawsuit. Before long, the firm's passion for City of Hope's case evolved into a passion for its cause.

"At Irell & Manella, we strive to establish deep relationships with all of our clients," says Irell & Manella partner Morgan Chu. "But it's the rare client that saves lives on a daily basis. We were inspired by City of Hope's sense of mission and purpose. Our relationship mushroomed, taking on new dimensions."

Just as Irell & Manella is unusual in the field of law, City of Hope is unusual in the world of medicine. Unlike most medical research institutions, which are affiliated with universities, City of Hope is a stand-alone center and is devoted primarily to the study and treatment of life-threatening diseases, such as cancer, diabetes and HIV/AIDS.

As City of Hope president and CEO Michael A. Friedman, M.D. puts it, "I have found that what Irell & Manella stands for and what we stand for are amazingly congruent."

"They went from representing a client to understanding what that client stood for to caring so much about what the client does to invest in its future. They decided to use their resources for purposes that are transcendent, not having to do with law but with what sort of human being you can be."

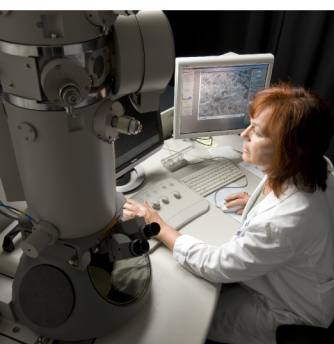
In 2002, Irell & Manella began expanding on the relationship with City of Hope by making gifts in support of the graduate school's endowment and also establishing a symposium and a lecture fund. Individual lawyers also made gifts for the school's endowment. And the firm's staff took on the cause, making quilts on their own time for City of Hope's patients undergoing painful treatment.

Then the firm started to consider doing something bigger and more, well, unusual.

And so, the idea emerged to make a major grant to the graduate school. This ultimately took the form of a donation of \$5 million, which was matched by a \$5 million anonymous gift. An additional gift of \$2 million created the Irell & Manella Visiting



Students learn to be outstanding research scientists in chemical, molecular, and cellular biology.



The program develops a professionally trained scientist, prepared for a career in academia, medicine or industry.

Professorship. The firm also donated \$3 million to establish the Irell & Manella Cancer Center Director's Distinguished Chair, the funds of which support such programs as cancer biology, developmental cancer therapeutics and cancer control and population sciences.

The graduate school dates back to 1994, when it first opened its doors to students interested in pursuing the fields of chemical, molecular and cellular biology, as well as bioinformatics and genetics. While studying there, students are able to get hands-on experience working alongside scientists and physicians who are developing new therapies for cancer and other life-threatening diseases. The school is a leader in "translational research," which applies breakthroughs in basic science to real-world clinical situations, making it possible for patients to benefit from the latest state-of-the-art treatments. Alumni have gone on to positions at major universities, research institutions and pharmaceutical and biotechnology companies.

Students not only have the chance to change the lives of others, but also find their own lives changed in the School's nurturing environment. Fewer than 100 are admitted each year. Each student receives a full tuition waiver and a stipend of \$30,000 per year, along with free medical benefits. All of this is designed to allow them to fully focus on the challenging work of unraveling medical mysteries in the search for long-sought cures.

While students at the Irell & Manella school pursue their studies, lawyers at the Irell & Manella firm continue to represent City of Hope, especially in the area of intellectual property rights. The firm successfully represented City of Hope in a jury trial and on appeal securing hundreds of millions of dollars in royalties for City of Hope relating to fundamental discoveries that helped create the biotechnology industry.

"It is gratifying that our client relationship with City of Hope has deepened into something more akin to a partnership," says Irell & Manella former Managing Partner Elliot Brown. "We are thrilled to be able to help in the courts so they can continue to achieve so much in the labs."

Irell & Manella has offices in Los Angeles and Newport Beach, which are ranked number one in their regions in Intellectual Property, Commercial Litigation and other areas of specialty.

City of Hope is located in Duarte, California, just northeast of Los Angeles, and is ranked as one of "America's Best Hospitals" in cancer and urology by *U.S. News & World Report*.

Two preeminent institutions. Two partners. Both leaders. Both pioneers.



Morgan Chu received an honorary doctorate recognizing his commitment to advancing City of Hope's research and education programs.



Graduates of the program are awarded the degree of Doctor of Philosophy in biological sciences.



About City of Hope

Founded in 1913, City of Hope is a leading research and treatment center for cancer, diabetes and other life-threatening diseases. Designated as a Comprehensive Cancer Center, the highest honor bestowed by the National Cancer Institute, and a founding member of the National Comprehensive Cancer Network, City of Hope's research and treatment protocols advance care throughout the nation. It is also a pioneer in the fields of bone marrow transplantation and genetics.

About Irell & Manella

Irell & Manella LLP is a full-service law firm with offices in Los Angeles and Newport Beach, California. Founded in 1941, Irell is nationally recognized for its intellectual property, litigation, corporate and tax practices. The firm's clients include Fortune 500 corporations, universities, and leading-edge entrepreneurial companies. For more information, please visit www.irell.com.

IRELL & MANELLA

LLP

Los Angeles | 1800 Avenue of the Stars, Suite 900, Los Angeles, California 90067-4276 | Telephone 310.277.1010
Newport Beach | 840 Newport Center Drive, Suite 400, Newport Beach, California 92660-6324 | Telephone 949.760.0991
www.irell.com